

Fiber fusion splicer

Intelligent fully automatic



4.3 inch
SPI touch screen

8 s
Efficient fusion
welding

18 s
Rapid heating

6 motors
Accurate positioning

3
Three-in-one clamp

5200 mAh
High battery life

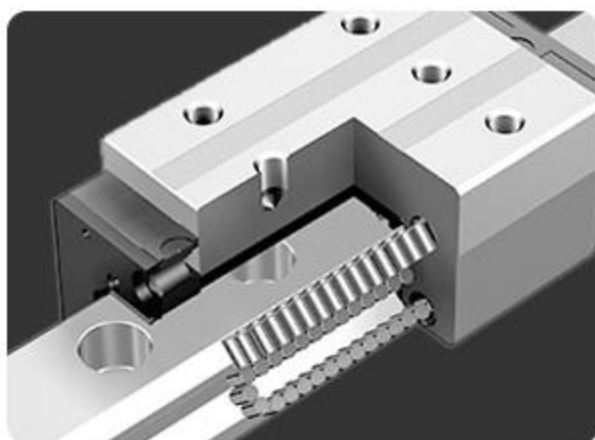
300 X
Magnification

6 Motor drive

Equipped with six motors and precise micro-step guides, it has less positioning and dissolution loss than 4 motors. Faster dissolution time and higher work efficiency



Copper core motor



Microstep guide

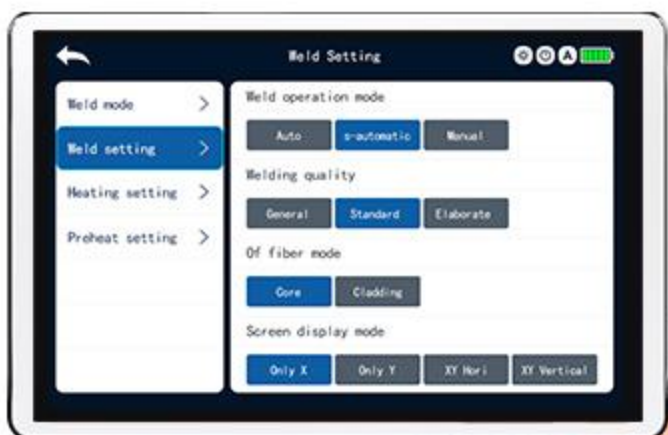
180° flippable Screen

High resolution LCD+180° flippable touch screen
GUI operation interface design, convenient and easy to operate



Intelligent GUI interface

The screen is concise and clear, and the operation is smooth
Intelligent detection and prompt of welding faults



Welding data can be exported and can save 10000 welding data and 1000 images

18 Seconds Heating

Supports automatic or manual heating mode, supports pre heating, preset 6 different heat shrink tubes to choose from, and can define and modify the temperature



Built in VFL+OPM

Built-in red light source and optical power, supports six wave-lengths, self-calibration of optical power

Large capacity storage, can save up to tens of thousands of data

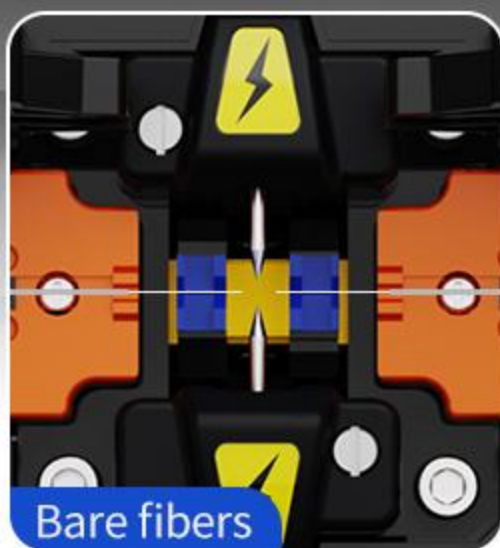
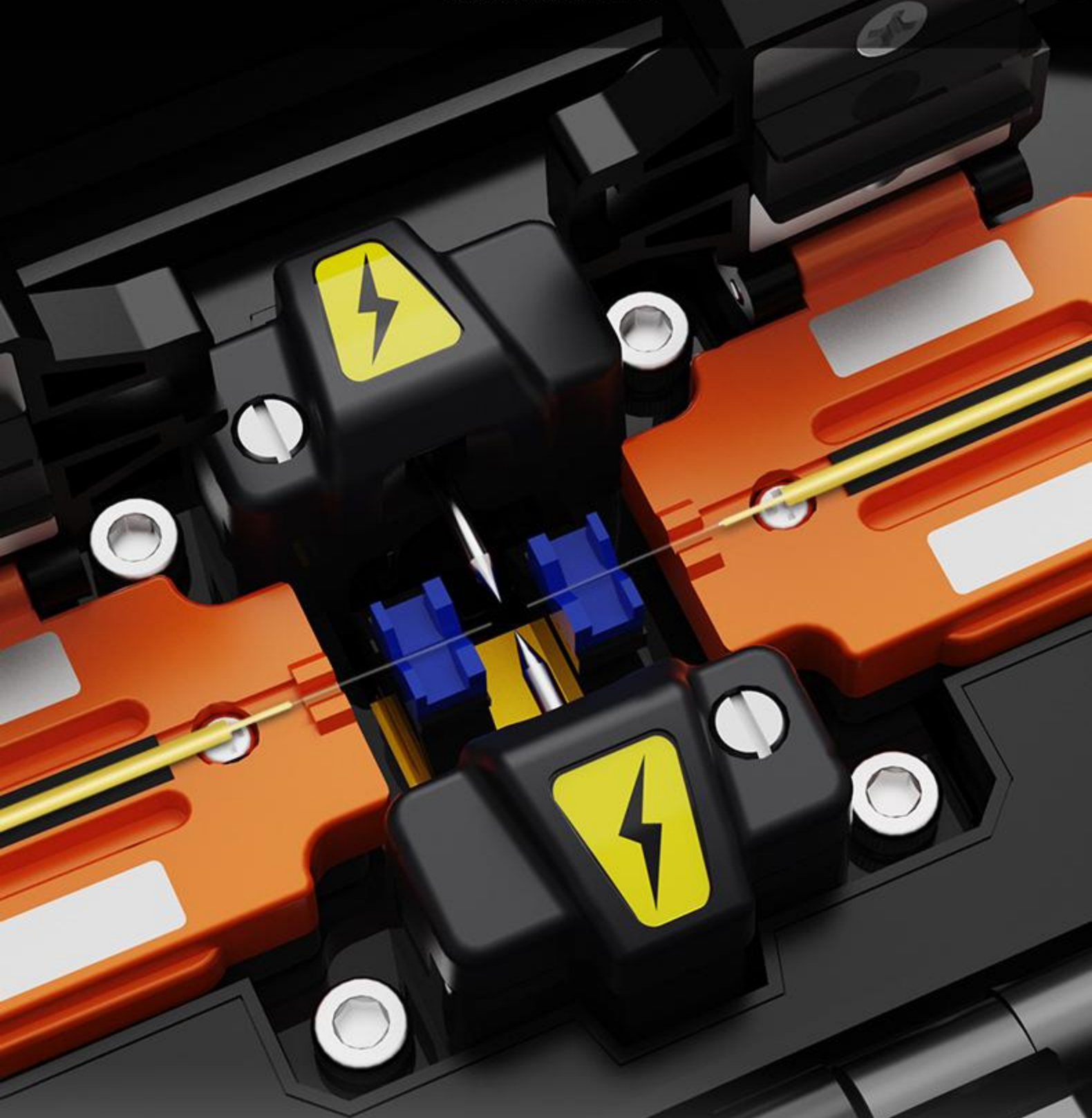


Red light source

Optical power

Three-in-one clamp

Three-in-one universal clamp for patch cords, bare fibers, leather cables, etc. Fully automatic splicing of optical fibers, fast fixation, stable and firm



Can complete 200 fusion and heating cycles

5200mAh high battery life

Pop up battery compartment for single battery charging
Supports automatic shutdown and power-saving modes



DETAIL DISPLAY



01. Equipped with LED lighting for convenient operation in dark environments



02. With status indicator light and heating indicator light



03. Supports external charging, USB upgrade, and fusion data export when turned on



04. With rental mode and multiple language settings (customizable languages)



05. Equipped with dedicated toolbox and fiber optic cutting knife

Product Parameters



Electrode life 3000times

battery capacity 5200mAh(200 times)

The output voltage DC11.1V

Charging input AC100-240V、 50/60Hz

Welding machine size 156*155*152mm

Weight (bare metal) 1.74KG(including battery)

Working environment Temperature (°C): -15+50 Humidity: ≤ 95% RH (without condensation)
Wind speed: ≤ m/s

Storage conditions Temperature (°C): -40+80 Humidity: 0~95% Battery temperature:
-20 °C~+30 °C

Illumination Automatic, manual

Charging time ≤3.5 hours

USB port output 5V/500mA

Charging output DC13.5V/4A

Toolbox size 342*280*187mm

Weight 4.7KG

Technical Parameters

Applicable fiber optic	SMF(G.652)/MMF(G.651)/DSF(G.653)/NZDSF(G.655)
Fiber Diameter	Cladding: 80-150 μ M; Soil cover layer; 0.1-3mm
Splice loss	0.02dB(SMF)/0.01dB(MMF)/0.04dB(DSF/NZDSF)
Alignment method	Fiber core, cladding
Focusing method	Six motor automatic focusing
Sealing	Auto/Manual
Weld time	8 seconds (typical SMF value)
Relay testing	1.96-2.25N
Image display	Capacitive 5.5-inch touch LCD screen
Magnification	300 (X/Y)/150 (X/Y synchronization)
Welding record	10000 welding data and 1000 images
Typical heating time	18S
Heating time	0-60S
Heat shrinktubing sleeve	20mm/30mm/40mm/50mm/60mm
Local OPM	Range (dBm): -70~+3 Wavelength (nm): 850-1625nm/Uncertainty:+0.5%
Red light (VFL)	\geq 10mW
Operation interface	GUI graphical user interface

Product configuration



Host



Toolbox



Electrodes(Optional)



Cutting knife



Stripper(Optional)



Three mouth Miller pliers



Power adapter



Brush



Alcohol bottle



Shoulder strap
hand strap



Special fiber for
dissolving correction



Instructions/certificate
/warranty card



Carton